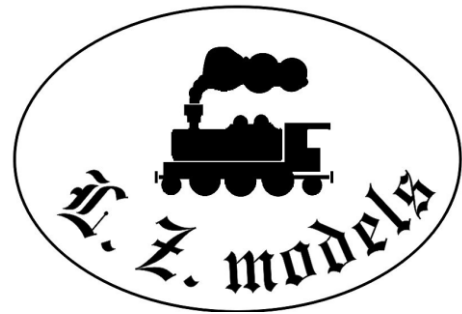




1/35 Upgrade set for BR86

Tolkien-Knorr compressor and
Tolkien-Knorr water feeding pump



. models.com

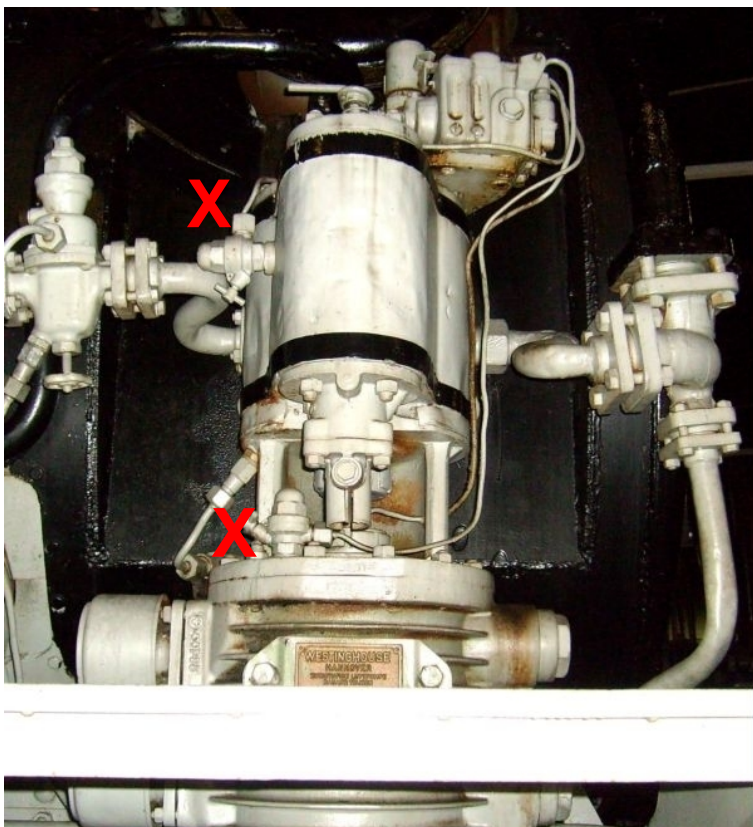
No.3530

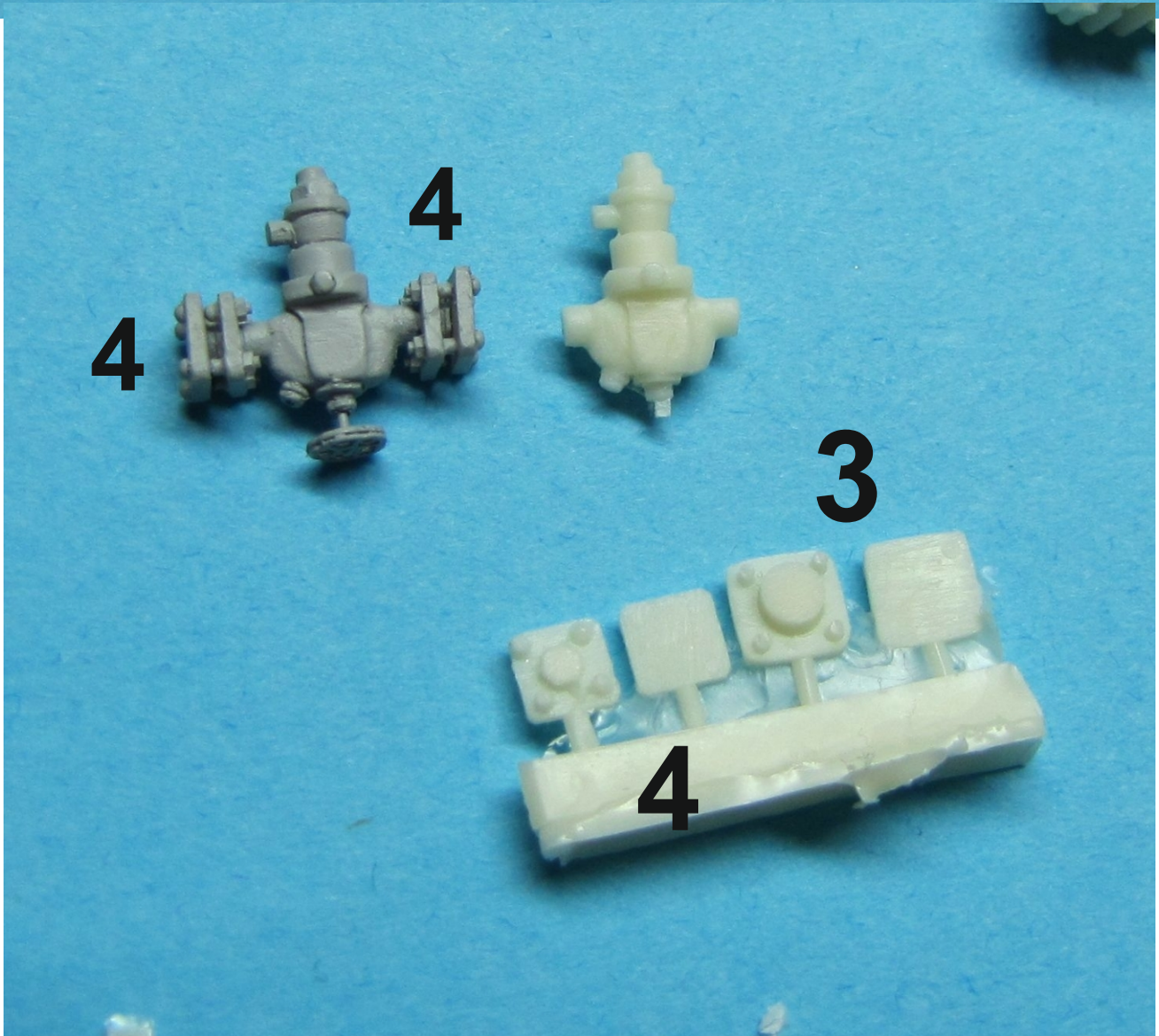
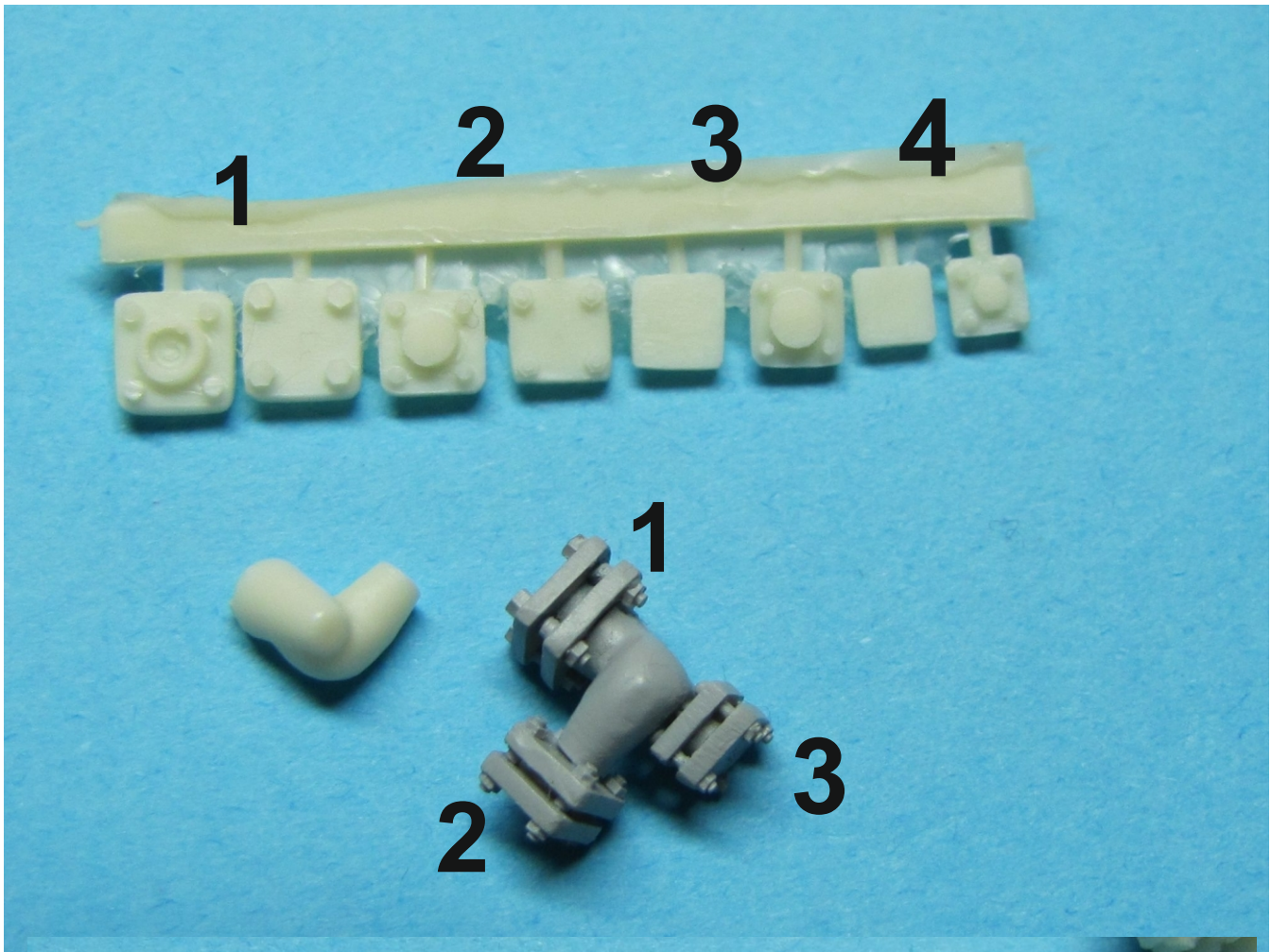
Keep safety rules when working with resin.
For safety reasons, and due to the complexity of construction,
this kit is recommended only for advanced modellers.
The kit contains small parts, keep it out of the reach of children.
Glue and paints not included
Contains **29** resin parts
1 PE part + wire for assembly

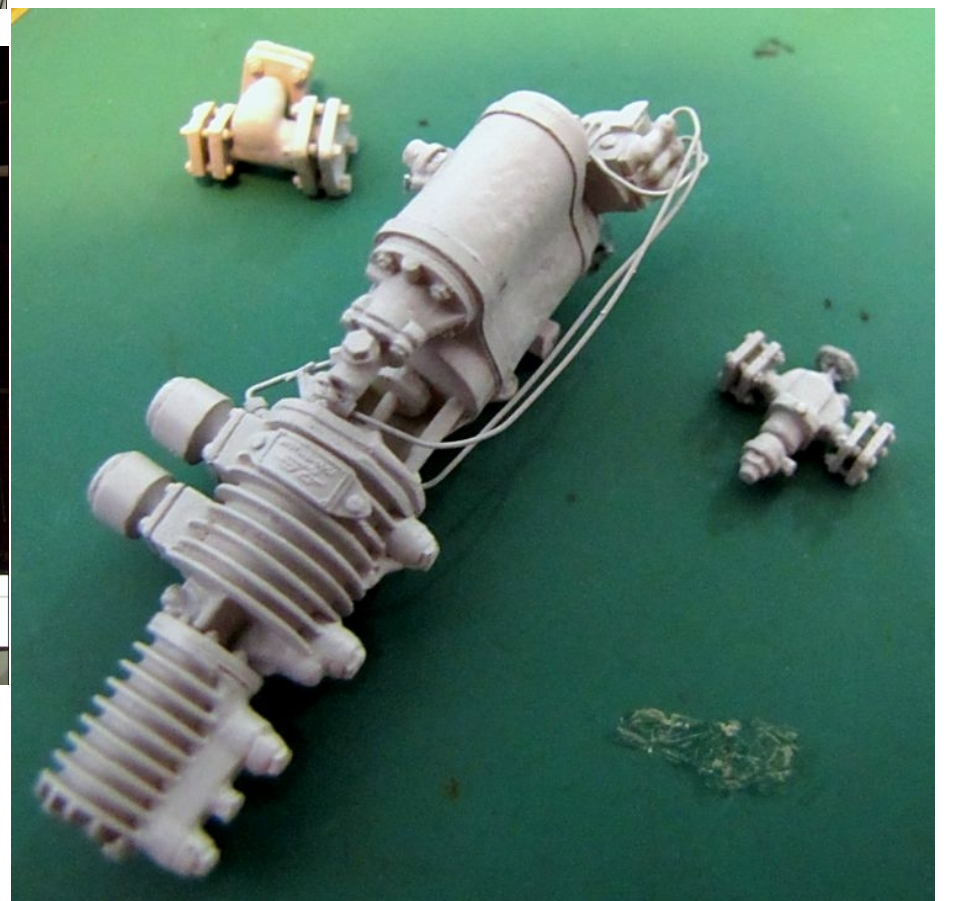
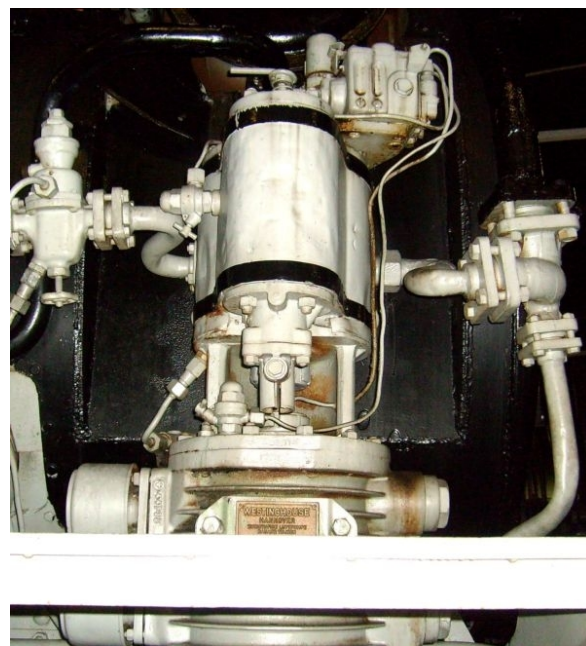
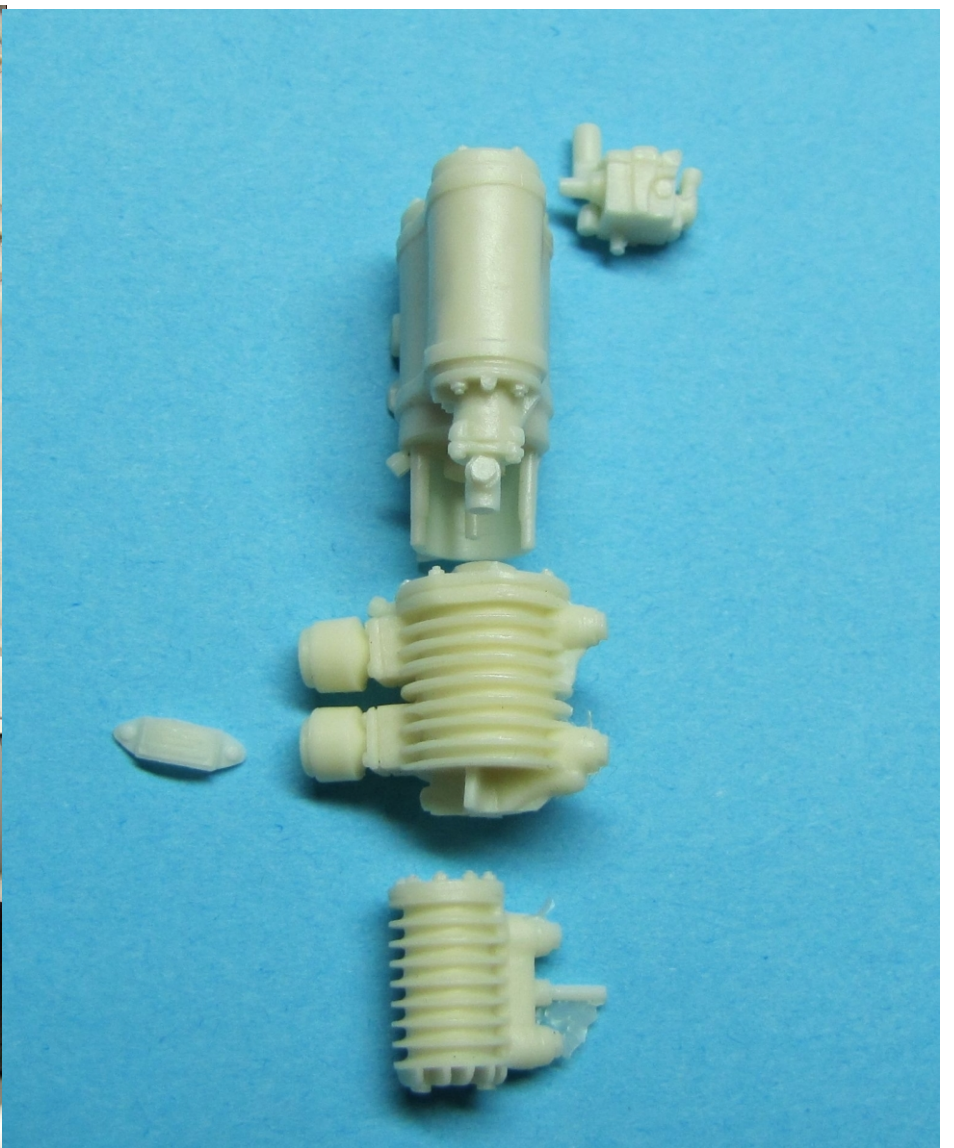
Baureihe 86 additional sets assembly instructions



compressor

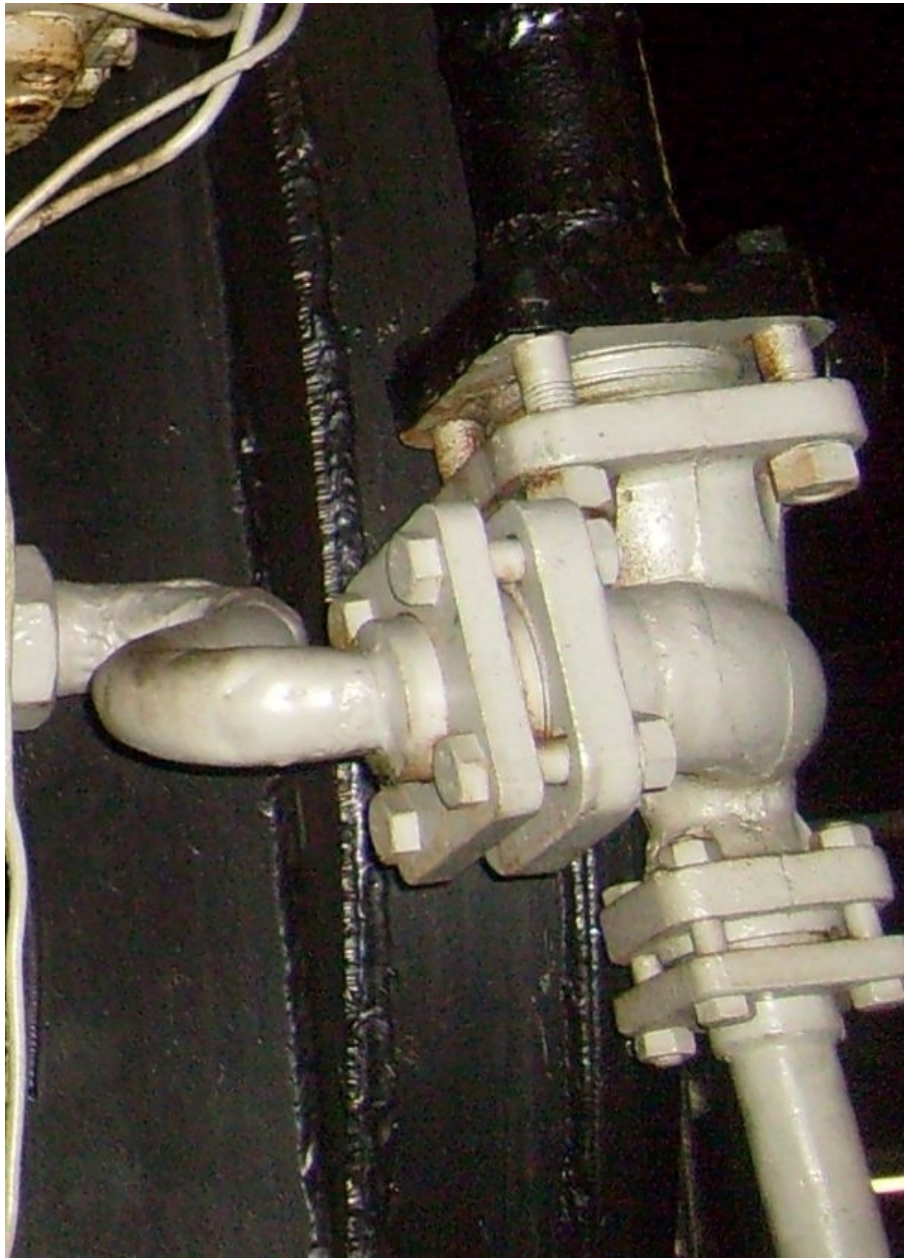
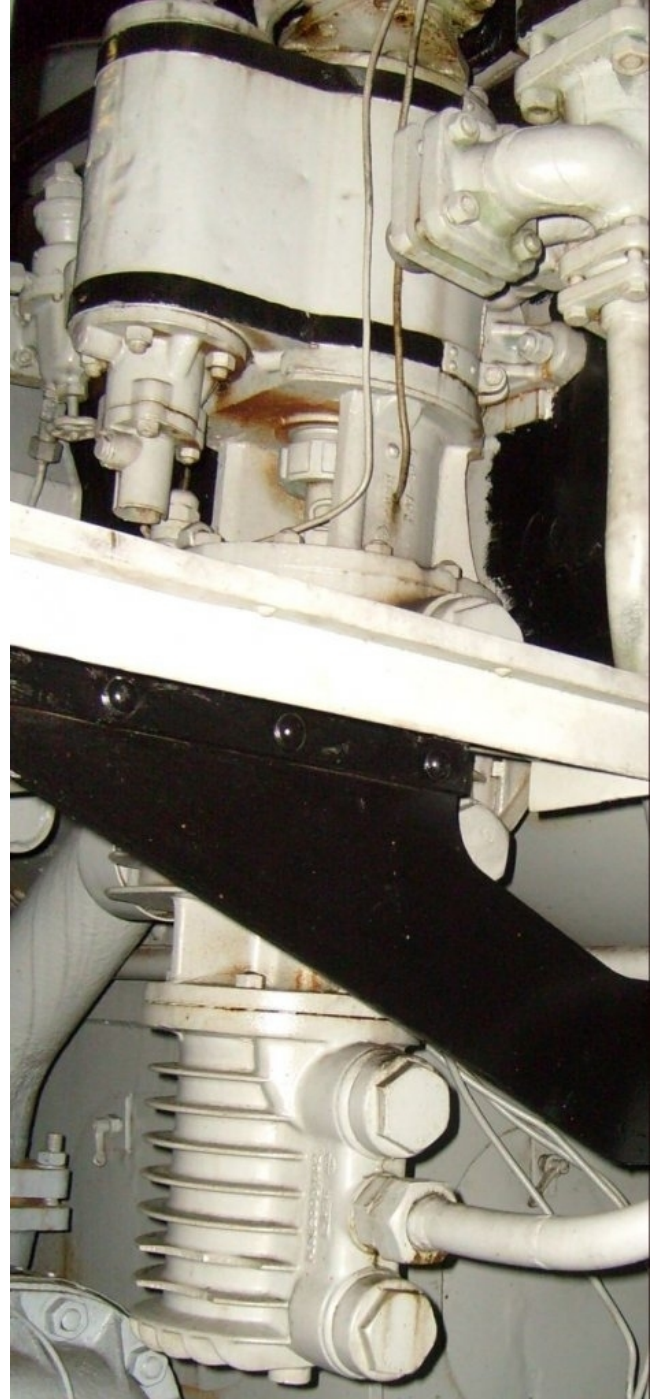




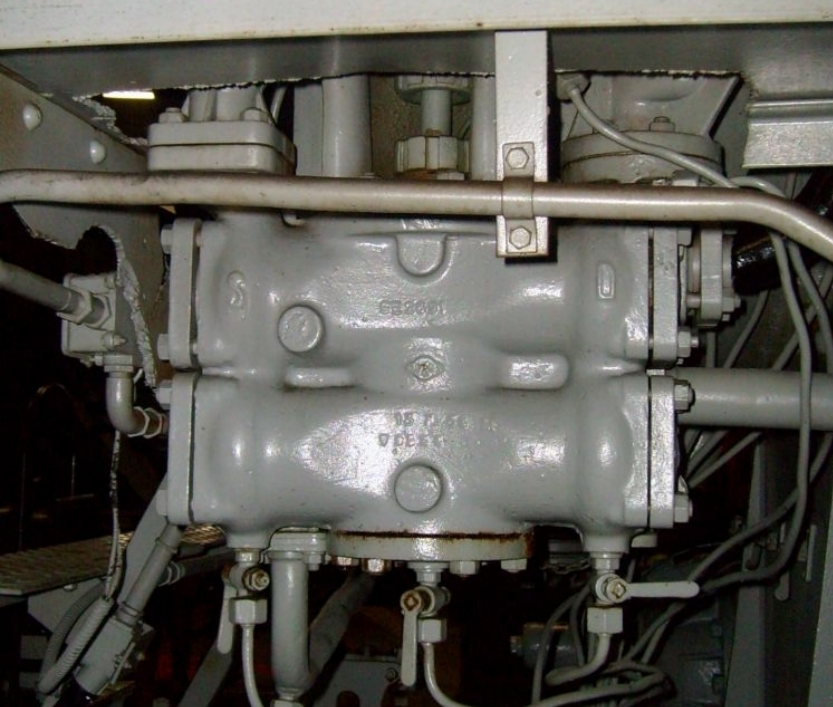
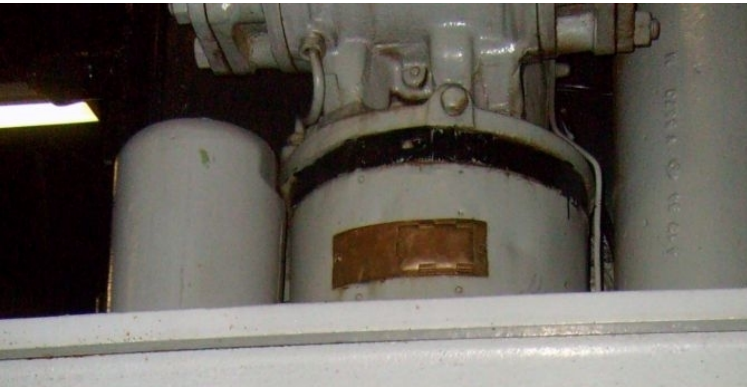
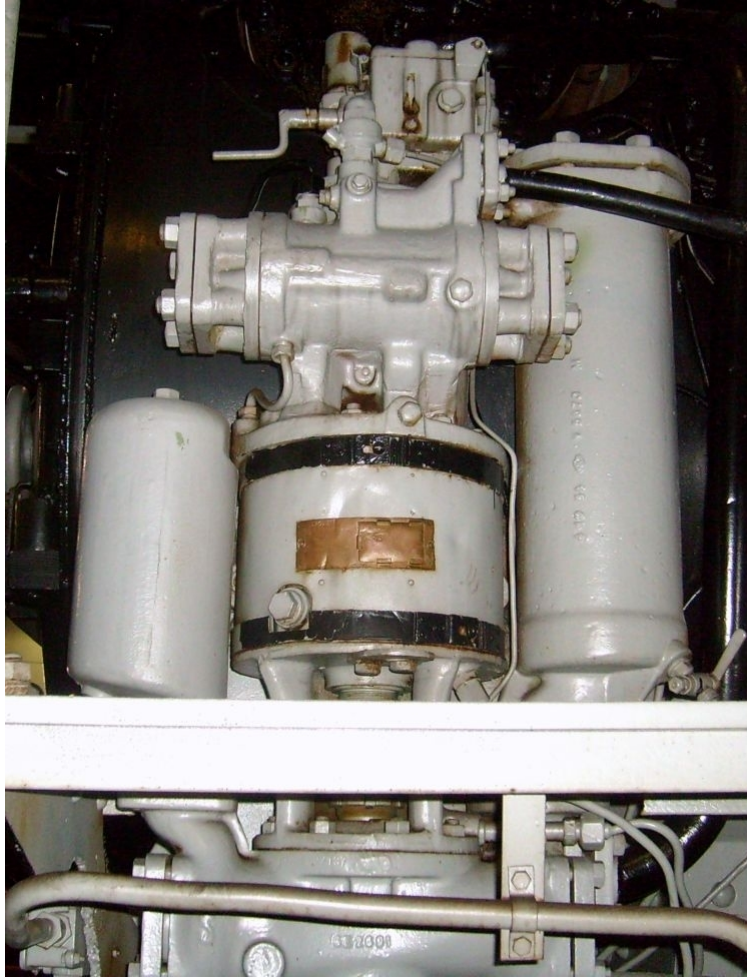


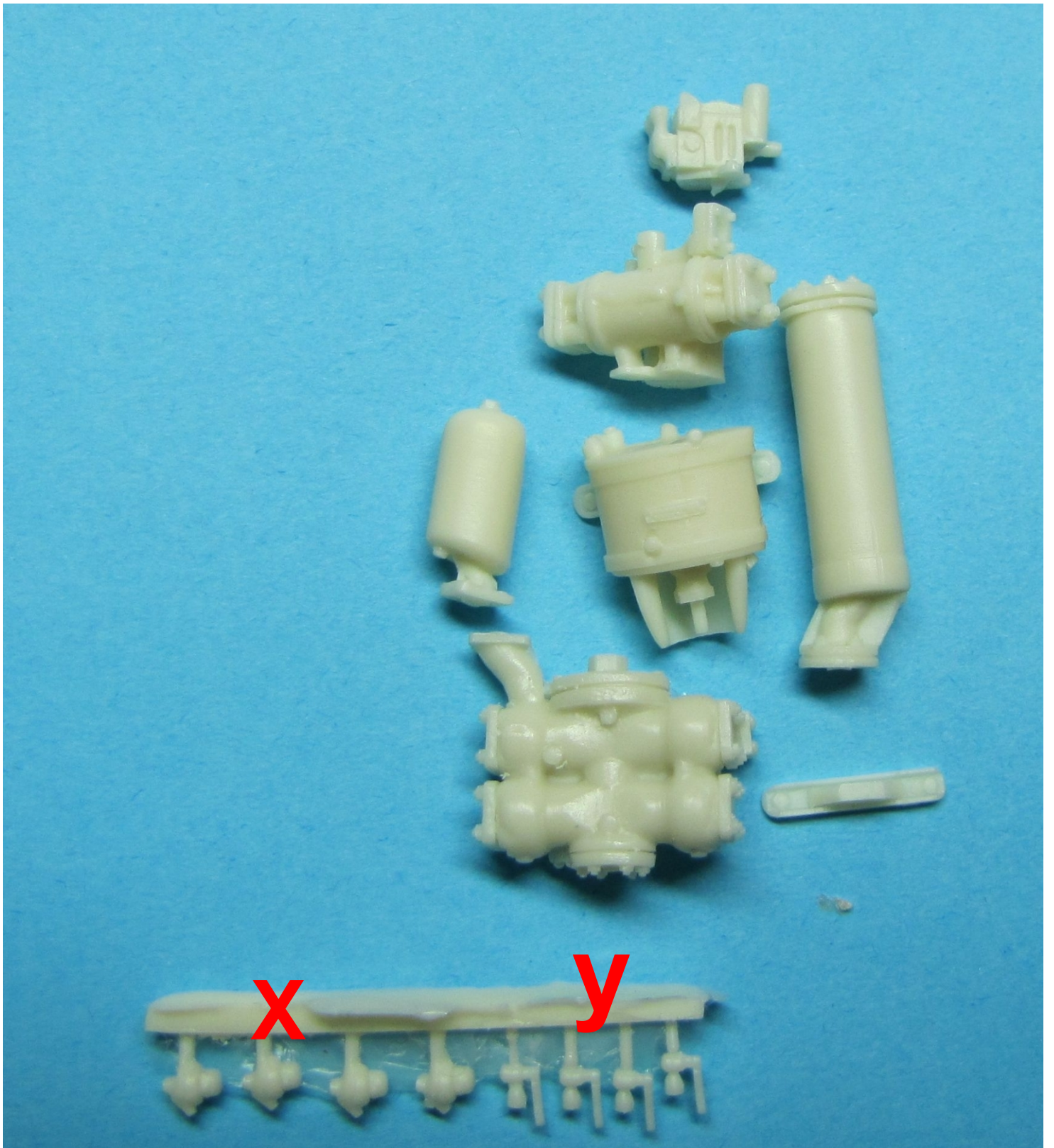


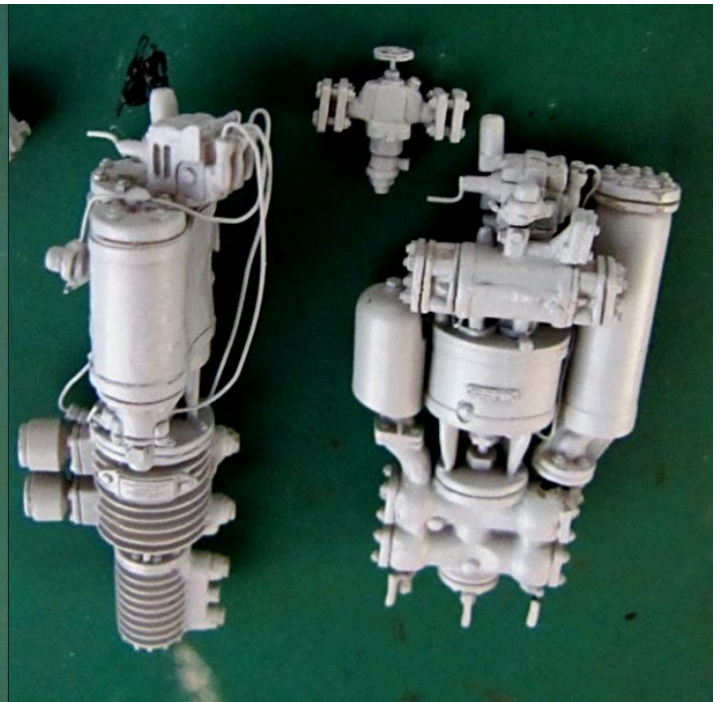
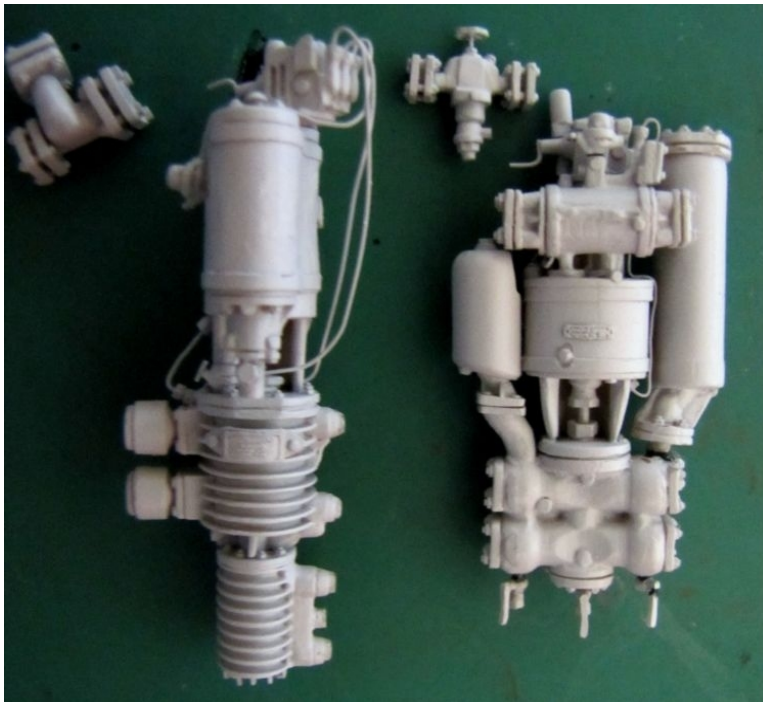
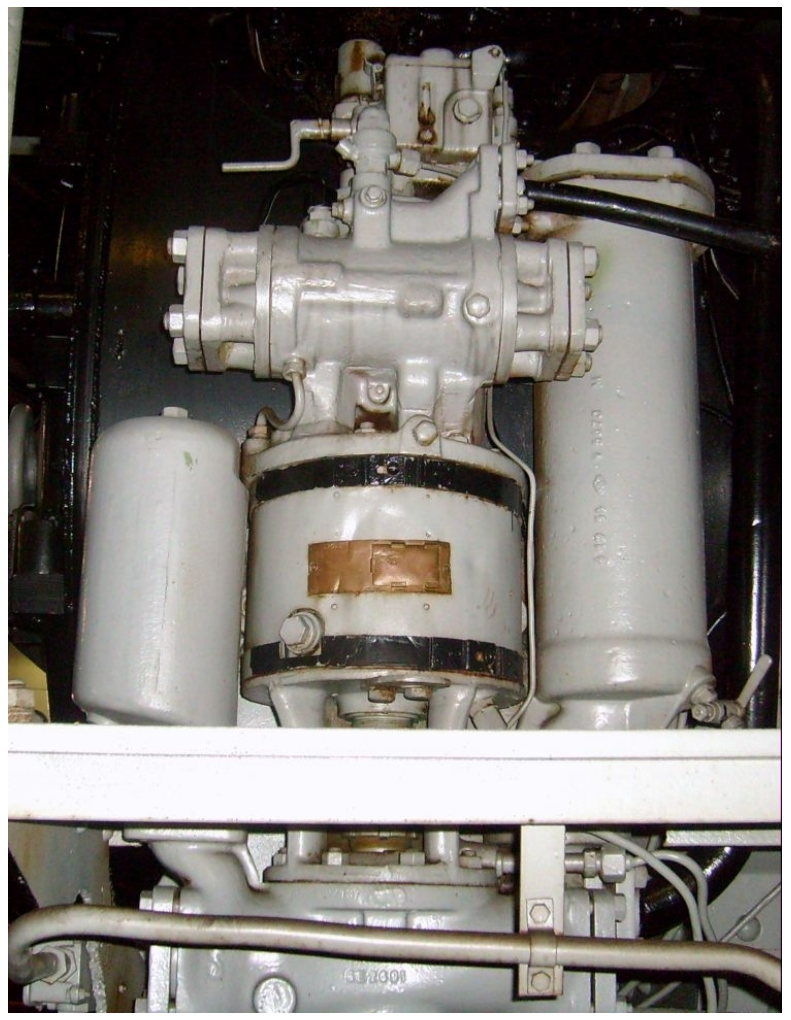
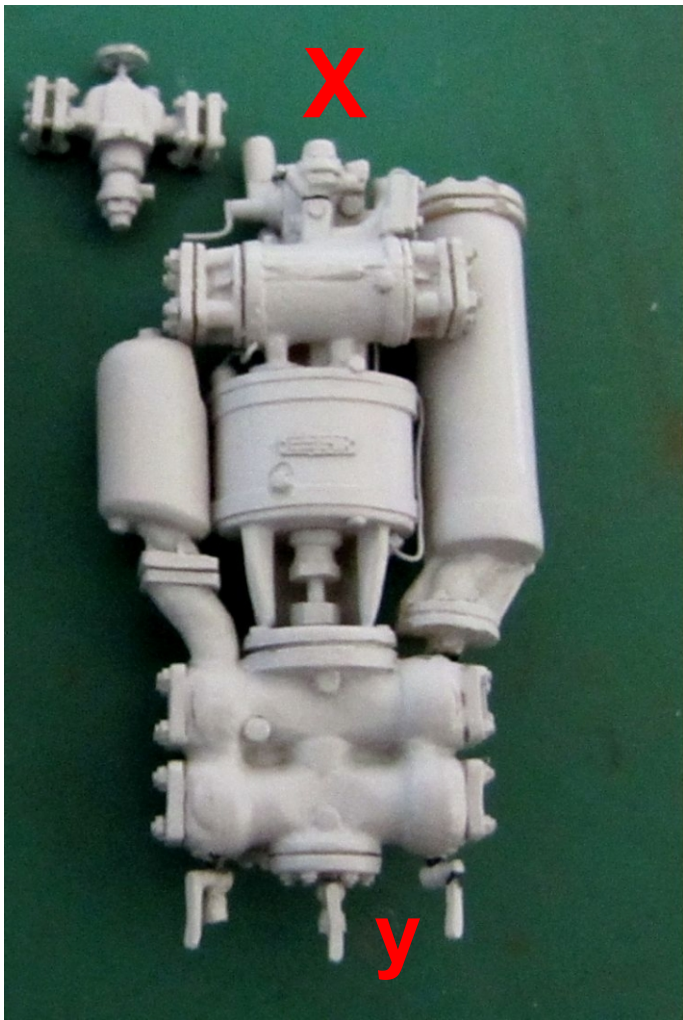
to replace parts H1, H2, H24 and H32 in the kit



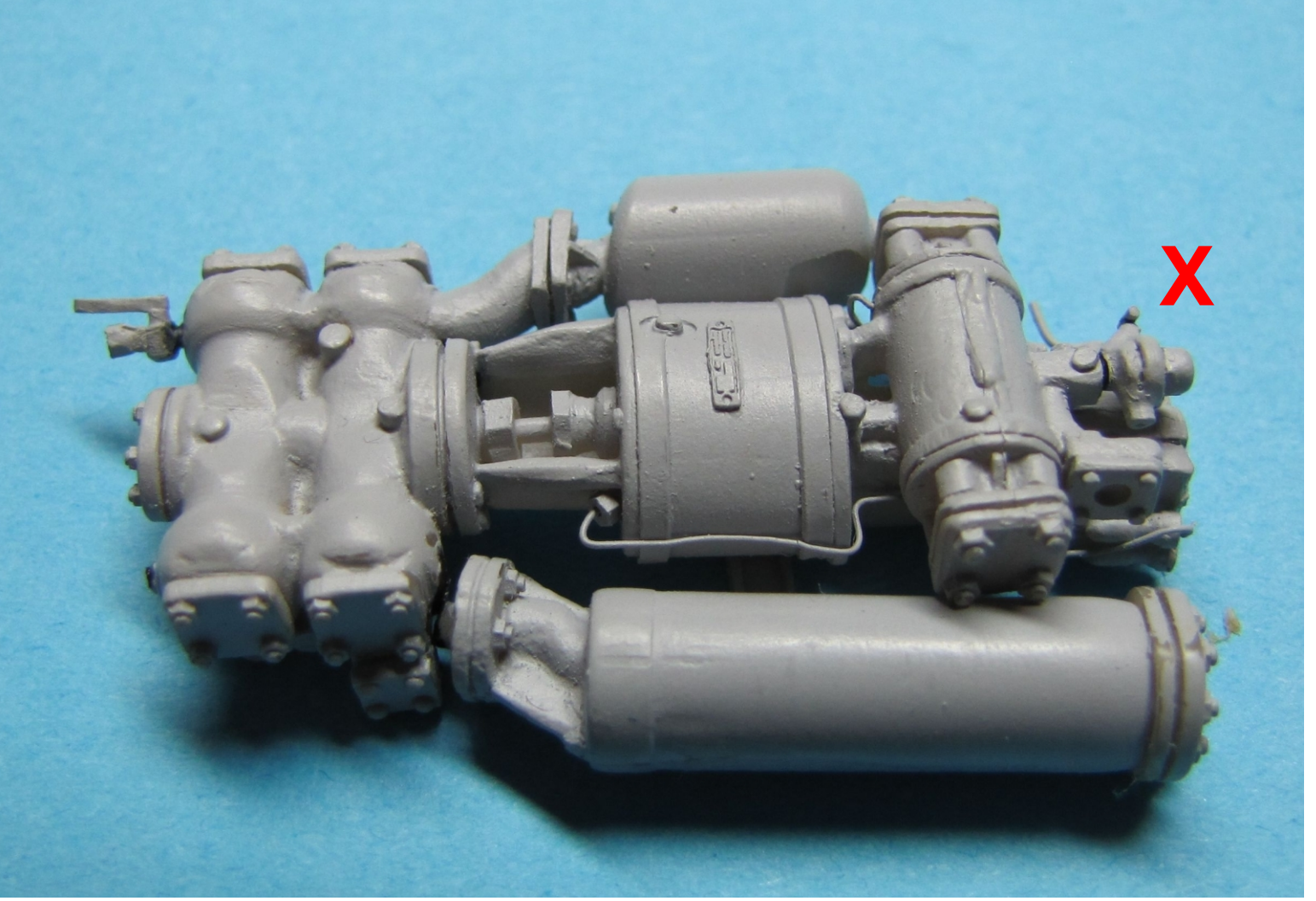
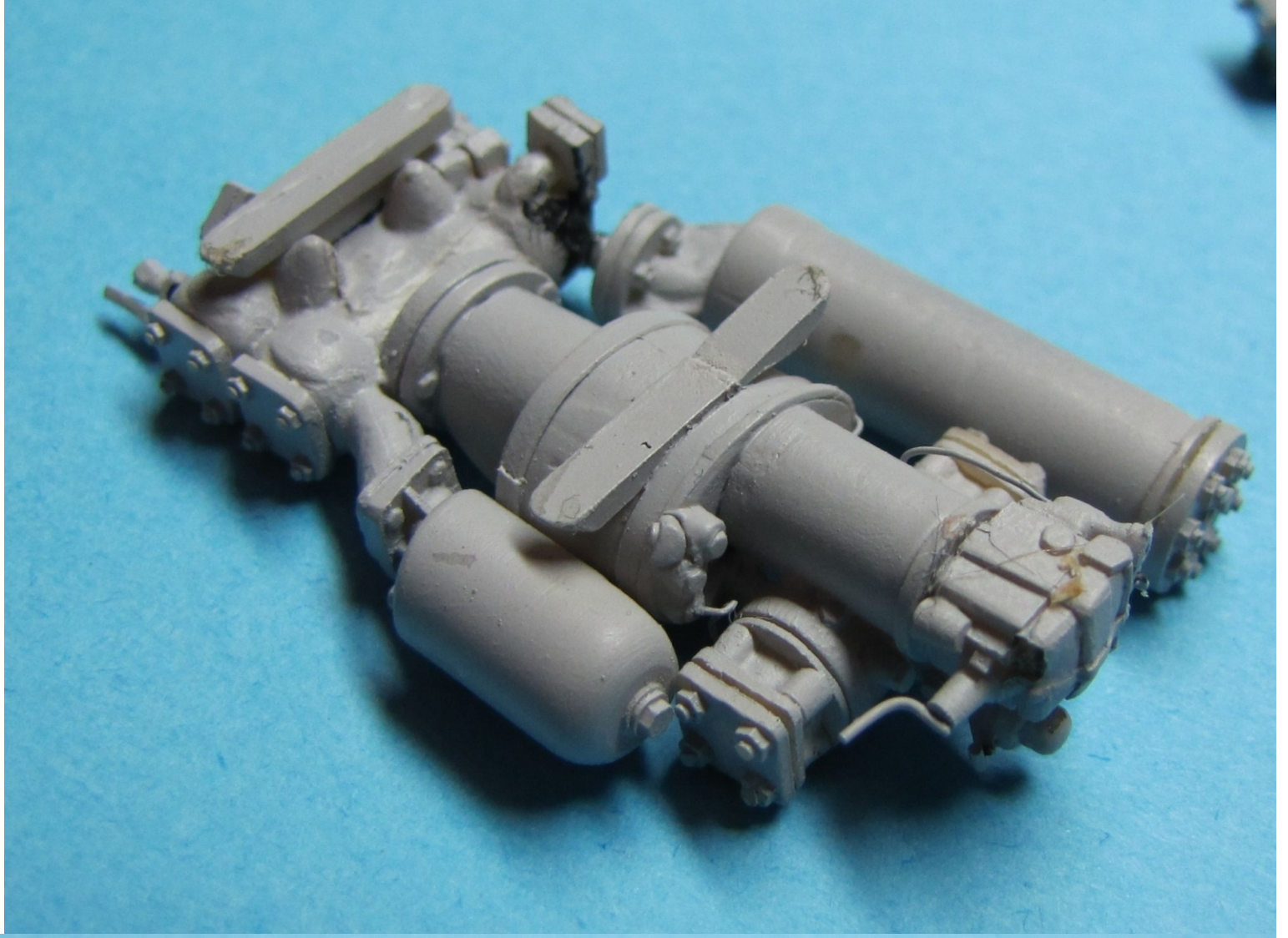
water feeding pump

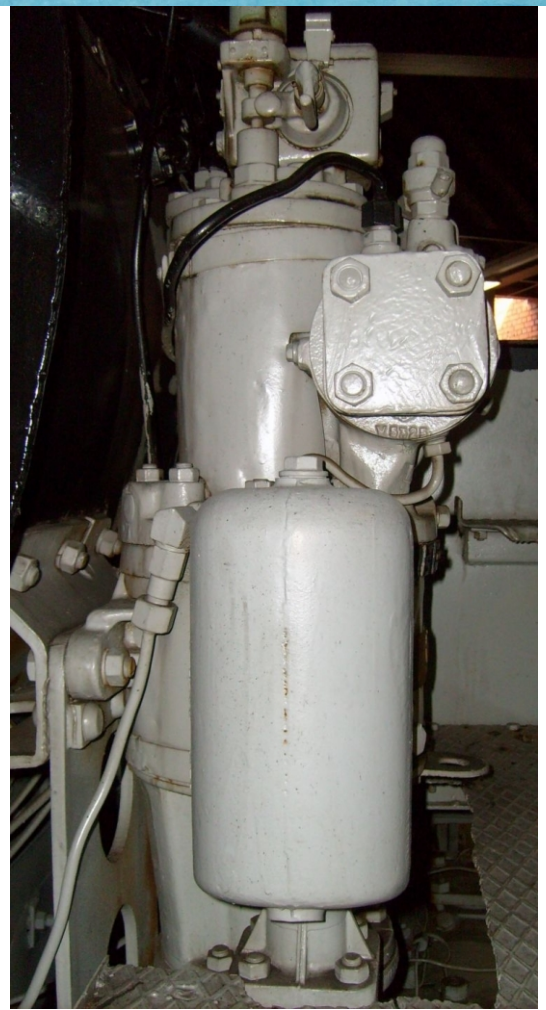
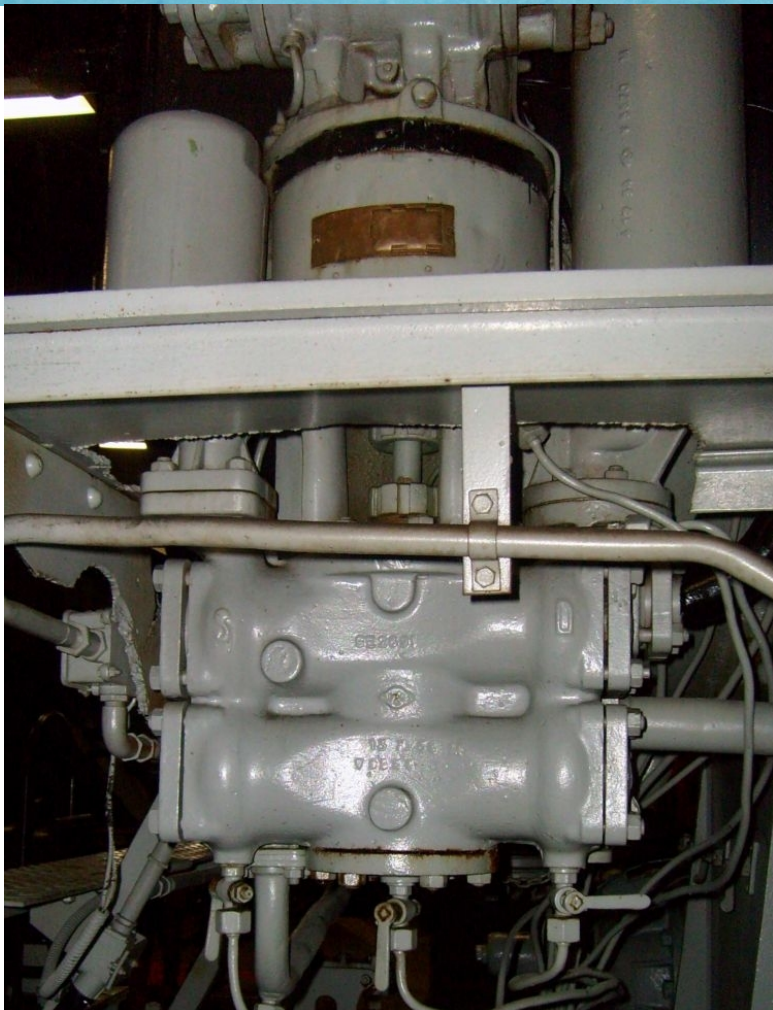
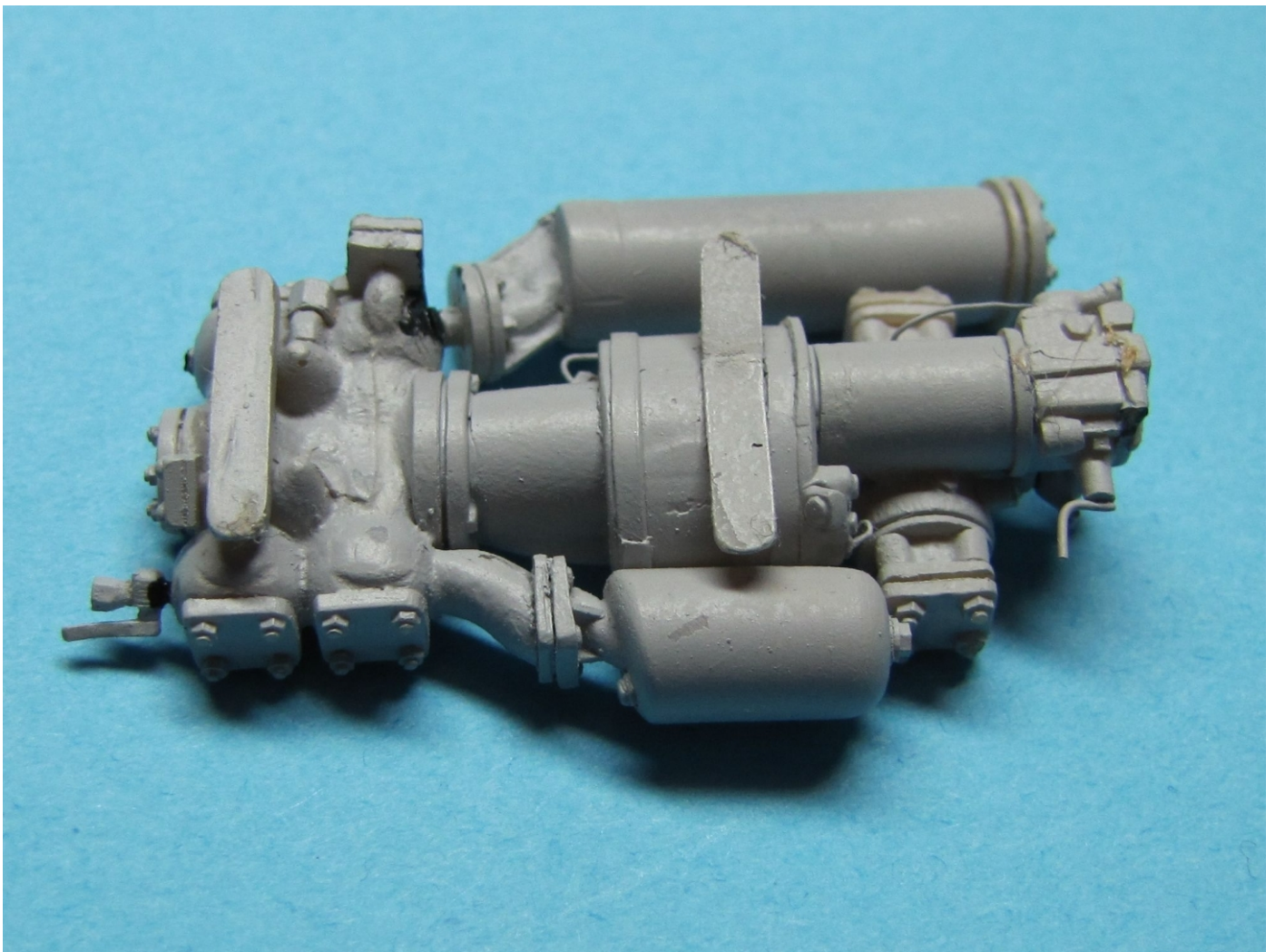






to replace parts G16, G17, G37, D7, H33, H34, H25, D43, J10 and J11 in the kit





For more info visit:
<http://www.mymodelplace.eu/135-Trumpeter-BR-86-Dampflokomotive.html>